

Length

Width



Crimped mesh 52x52

Figure drawn to scale 1:1

Crimped mesh 52x52



Available materials*



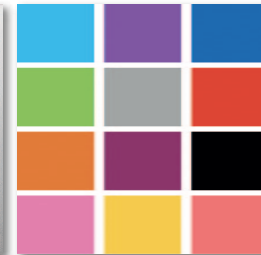
Steel



Sendzimir-galvanised

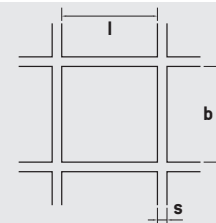


Stainless steel



Powder-coated

Available in standard formats and individual dimensions (w x l) of at least 300 x 300 mm to maximum 2,000 x 3,000 mm, as well as in wire thicknesses from 4.0 to 5.0 mm.



Crimped mesh
l = 52 mm
b = 52 mm
s = 4 mm or 5 mm

* Not all materials are available in all formats and sheet thicknesses.



SELECT AND ORDER ONLINE

All variants of this product can be found online in our shop. Simply enter the product name in the online search.



MEVACO